

32
mm

Plastic
P
塑料



ZWBPD032032

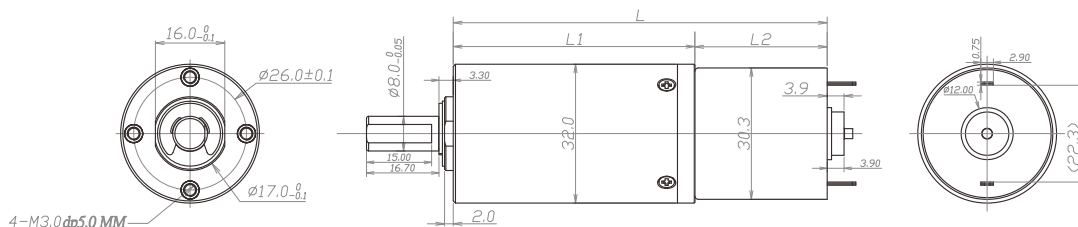
齿轮箱规格 Gearbox Specifications

外径	Outer diameter	32mm	轴承	Bearing	含油轴承	Porous bearing	滚动轴承	Rolling bearing
材质	Material	塑料 Plastic	轴向窜动	Axial endplay	≤0.3mm		≤0.3mm	
旋转方向	Direction of rotation	cw & ccw	输出轴径向负载	Radial loading on output shaft	≤50N		≤100N	
齿轮箱回程差	Gear backlash	≤3° 可定制 Customizable	工作温度	Operating temperature range	-20 ~ +75°C			

齿轮级数 Gearbox Stages

		2	3	4
减速比	Reduction ratio	16 / 23 / 33	67 / 94 / 133 / 188	272 / 383 / 541 / 764 / 1078
最大容许扭力 (gf.cm)	Max rated torque of gearbox (gf.cm)	30000	30000	30000
瞬间容许力矩 (gf.cm)	Instant torque of gearbox (gf.cm)	80000	80000	80000
齿轮箱效率 (%)	Gearbox efficiency (%)	73	65	58
长度 (mm)	Gearbox length L1 (mm)	35.7	45.7	55.7

技术插图 | Technical Drawing



马达规格参数 Motor Specifications

马达(可选择)	Motor type (optional)	直流有刷电机、直流无刷电机 Brushed DC motor, Brushless DC motor	输入速度	Input speed	≤12000rpm
电压(可选择)	Voltage (optional)	3-24V	电流	Current	300mA max

参考数据 (马达定义值): 24v 7700rpm 下表根据马达定义值测试, 数据只作为参考值

型号 Model	Rated Speed 额定转速	Max Speed 最高转速	Max Rated Torque 额定容许力矩	Max Instant Torque 瞬间容许力矩	Reduction Ratio 减速比	Gearbox Length 减速箱长 L1	Overall Length 总长 L
	rpm	rpm	gf.cm	gf.cm			
ZWBPD032032-16	469	1875	30000	80000	16	35.7	78.2
ZWBPD032032-23	313	1250	30000	80000	23		
ZWBPD032032-33	227	909	30000	80000	33		
ZWBPD032032-67	112	448	30000	80000	67	45.7	88.2
ZWBPD032032-94	80	319	30000	80000	94		
ZWBPD032032-133	56	226	30000	80000	133		
ZWBPD032032-188	40	160	30000	80000	188		
ZWBPD032032-272	28	110	30000	80000	272	55.7	98.2
ZWBPD032032-383	20	78	30000	80000	383		
ZWBPD032032-541	14	56	30000	80000	541		
ZWBPD032032-764	10	39	30000	80000	764		
ZWBPD032032-1078	7	28	30000	80000	1078		

注: 可根据客户要求定制 Please contact us for customized products